

PBJ quarterly check-in

Prepping for PBJ quarterly
success: Critical answers to
your top questions

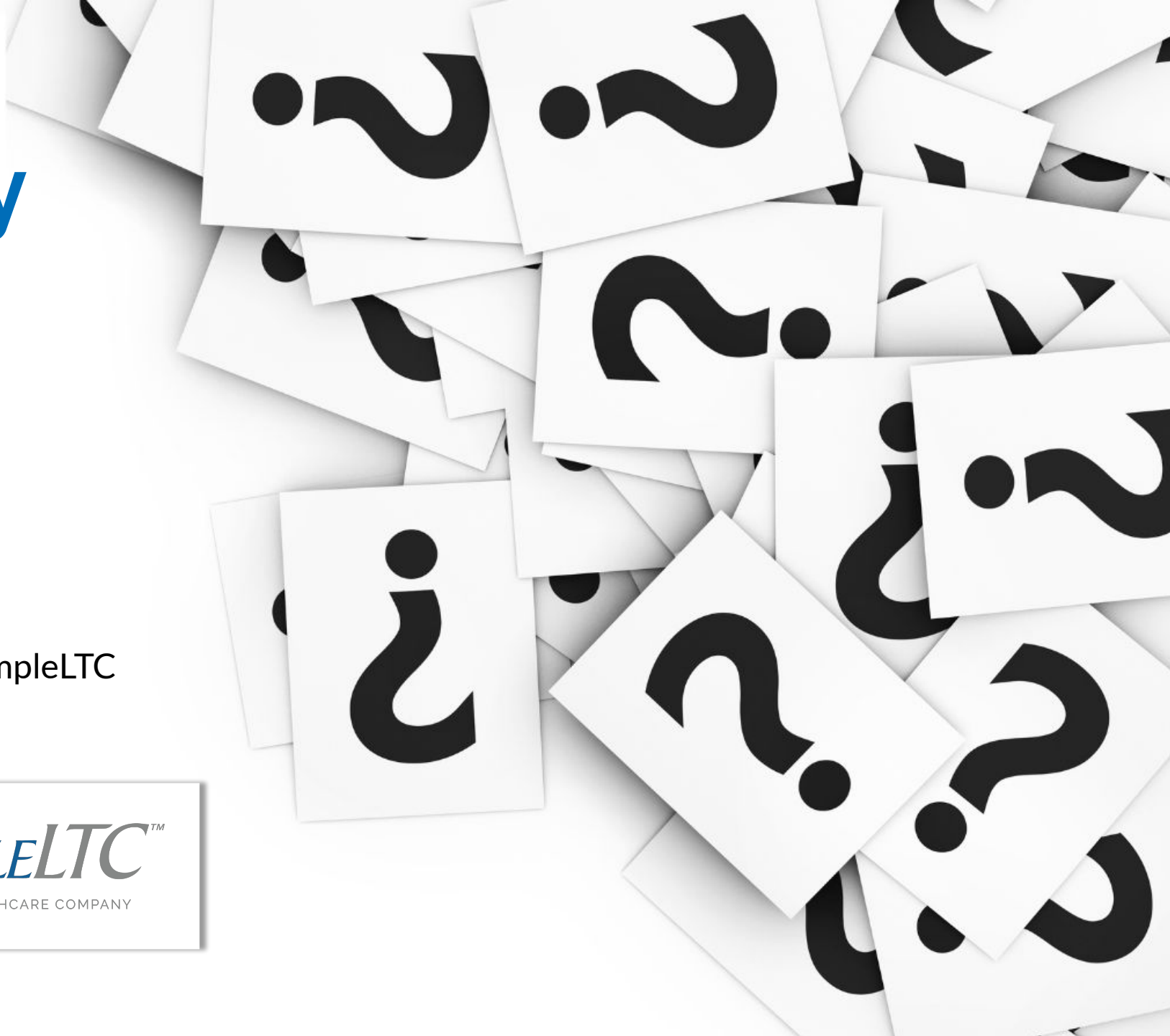
Jenn Feige, Co-founder, SimplePBJ™

Polly Kirkwood, Director of Sales, SimpleLTC

SimplePBJ™

SIMPLELTC™

A BRIGGS HEALTHCARE COMPANY



ezPBJ™ is now SimplePBJ™

Over the next few months, you'll see SimplePBJ™ on invoices, product sheets and within the product itself.

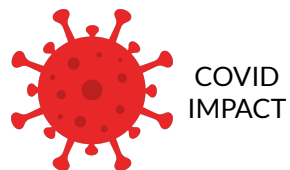
What *won't* change is our ongoing effort to provide you with outstanding software and support.



Agenda

- Current Updates
- Five-Star Staffing Calculations
- Back to Basics
- Live Q&A

Current Updates - Star Posting



	Data Period	Due to CMS	Five Star Rating Posted to Nursing Home Compare
Q1	October 1 – December 31, 2019	February 14, 2020	End of April 2020
Q2	January 1 – March 31, 2020	May 15, 2020 OPTIONAL SUBMISSION <i>(if submitting, no later than November 14, 2020)</i>	End of July 2020 NOT POSTING <i>(Q1 2020 held constant)</i>
Q3	April 1 – June 30, 2020	August 14, 2020	End of October 2020
Q4	July 1 – September 30, 2020	November 14, 2020	End of January 2021

Live Poll



Submit early, enter to win!

Submit your PBJ report to CMS by **Nov. 3** and get automatically entered to win one of five \$100 Target gift cards.

**Must submit through SimplePBJ™ to qualify*



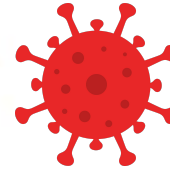
SimplePBJ™

Current Updates - Audits

Your Average Daily Resident Census is being updated automatically from CMS MDS records!

[Q3 2020](#)

92.1538



COVID
IMPACT

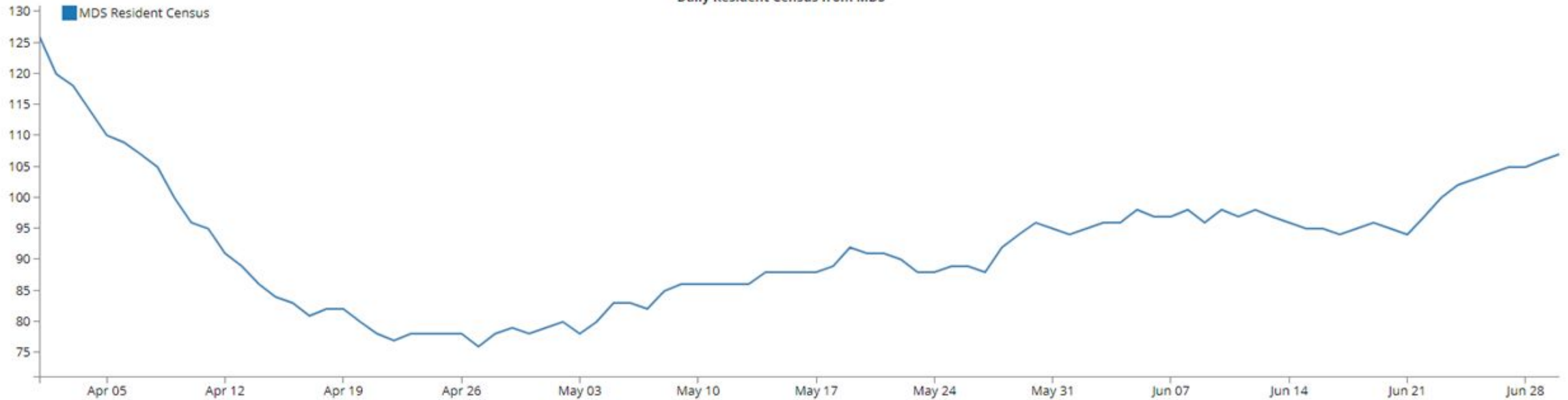
[Q2 2020](#)

143.1099

[Q1 2020](#)

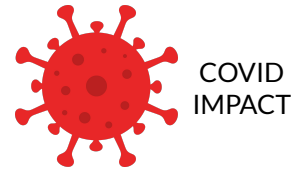
143.0326

Daily Resident Census from MDS



Current Updates - Allowable Hours

Do telehealth services count for PBJ? During the pandemic, staff have worked from home - can work hours by MDS and Business Office staff working from home be included in PBJ?

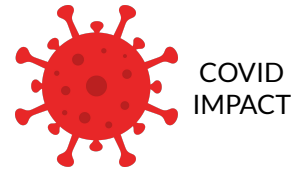


Telehealth hours for non-nursing staff may be included.

Telehealth hours for nursing staff may only be included in 40 Other Service Worker (Optional). **ALL nursing hours included in PBJ reporting MUST be worked on-site.**

Current Updates - Allowable Hours

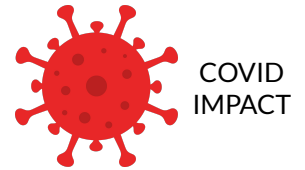
We had the National Guard in to cover shifts. How do I record that?



Hours worked by members of the National Guard or State strike teams deployed to facilities during the PHE can be reported in PBJ as long as the facility obtains a statement from FEMA or the State (a) verifying the staffing provided to the facility and (b) validating the hours reported by the facility for this additional staff.

Current Updates - Allowable Hours

Is the waiver for PCAs still in place? What about temporary staffing during COVID-19?



<https://www.cms.gov/files/document/summary-covid-19-emergency-declaration-waivers.pdf>

Waivers for (a) the Training and Certification of Nurse Aides and (b) In-Service Training are currently still in effect. If you want to include the hours of these temporary aides, you need to classify them as Nurse Aide in Training (PBJ Job Title 11). You cannot include their hours as Certified Nurse Aide (PBJ Job Title 10).

Five-Star Staffing Calculations

Adjusted HPRD =(Reported HPRD/Case Mix HPRD) □ National Average HPRD

$$\text{Hours}_{\text{Adjusted}} = (\text{Hours}_{\text{Reported}} / \text{Hours}_{\text{Case-Mix}}) * \text{Hours}_{\text{National Average}}$$

Five-Star Example

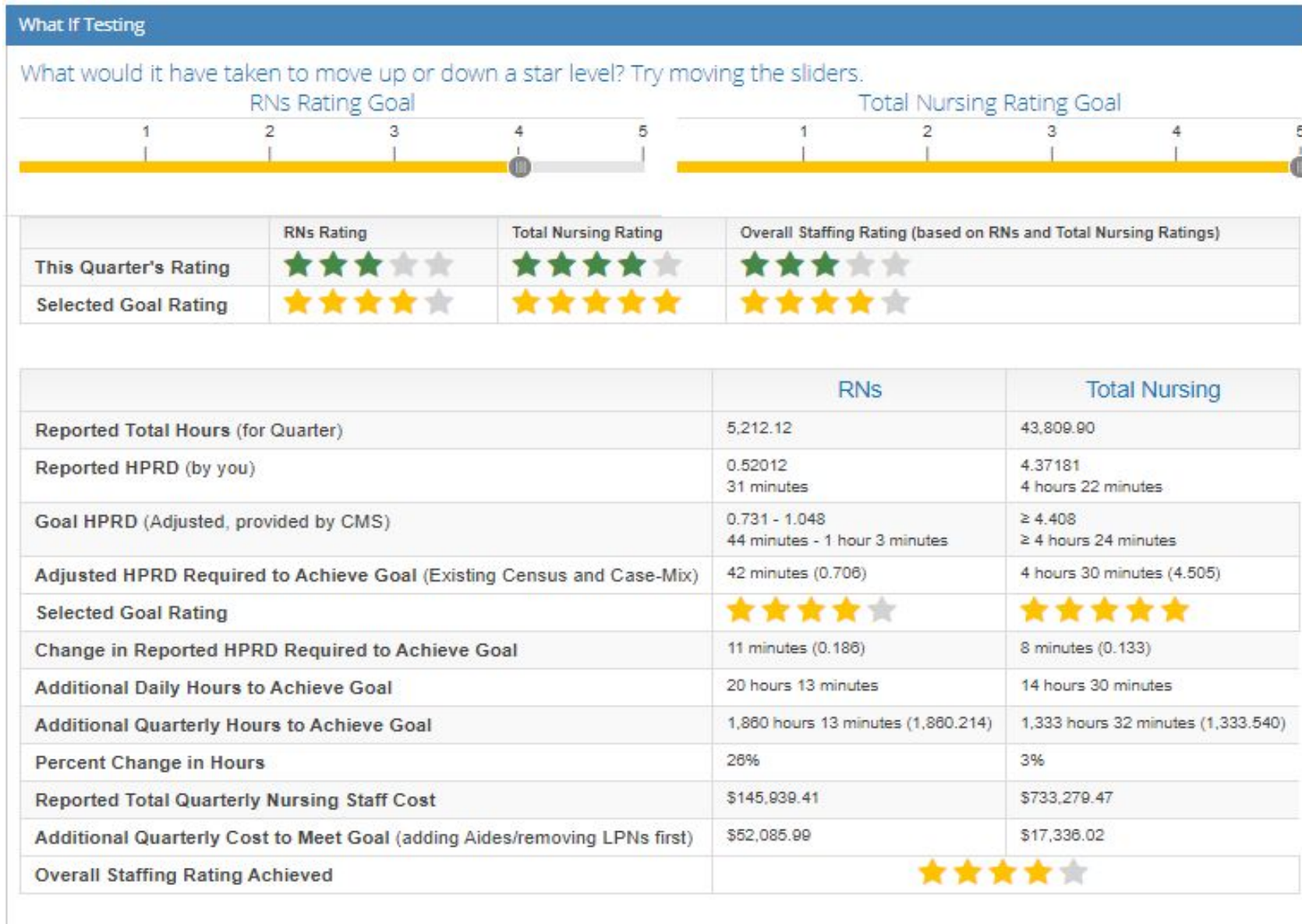
CMS Five Star Staffing Rating				
Overall Staffing Rating: ★★☆☆☆			Resident Census (from MDS): 108.9239	
	Aides	LPNs	RNs	Total Nursing
Reported HPRD (by you)	2.42853 2 hours 26 minutes	1.42316 1 hour 25 minutes	0.52012 31 minutes	4.37181 4 hours 22 minutes
Case-Mix HPRD (from Strive & RUGS)	2.1478 2 hours 9 minutes	0.76598 46 minutes	0.36338 22 minutes	3.27714 3 hours 17 minutes
National Avg (CMS reported)	Not Provided	Not Provided	0.37638 23 minutes	3.20666 3 hours 12 minutes
Adjusted HPRD (calculated)	2.34999 2 hours 21 minutes	1.39711 1 hour 24 minutes	0.53874 32 minutes	4.27779 4 hours 17 minutes
Rating	N/A	N/A	★★★☆☆	★★★★☆
Share of Total Nursing Reported Hours	56%	33%	12%	100%
Hourly Wage	\$ 13.00	\$ 19.00	\$ 28.00	

Overall Staffing Hours and Rating						
RN Rating		Total Nurse Staffing Rating (RN, LPN and Nurse Aide)				
		1	2	3	4	5
		< 3.108	3.108 - 3.579	3.580 - 4.037	4.038 - 4.407	≥ 4.408
1	< 0.317	★	★	★★	★★	★★★
2	0.317 - 0.507	★★	★★	★★	★★★	★★★★
3	0.508 - 0.730	★★	★★★	★★★	★★★★	★★★★★
4	0.731 - 1.048	★★★	★★★	★★★★	★★★★★	★★★★★
5	≥ 1.049	★★★	★★★★	★★★★	★★★★★	★★★★★

Note: Adjusted staffing values are rounded to the three decimal places before the cut points are applied.

 Add One Star to Overall Rating (if greater than health inspection rating)
 Subtract One Star from Overall Rating

Five-Star “What-Ifs”



Back to Basics - Meal Breaks

What is the deal with lunch deductions? Do I have to record lunch deductions even if my employee didn't take lunch? Do I have to record lunch deductions for my exempt staff?

Meal breaks (paid or unpaid) shall not reported for any staff (exempt, nonexempt and/or contract). Facilities must deduct a meal break from each employee's daily hours. For each full shift that staff (exempt, nonexempt and/or contract) are paid to work, a 30 minute meal break must be deducted from their shift (whether or not the employee actually takes a meal break). **This means - at a minimum - one 30-minute break removed for every 8 hours worked.**

Back to Basics - Training Hours

Can I included training hours in PBJ? How do I code education hours?

Hours for staff who are attending training (either onsite or offsite) and are not available to perform their primary role (e.g., providing resident care) shall not be reported. Additionally, if another staff member fills in for the staff member participating in training, the hours for the staff member in training shall not be reported.

Back to Basics - MDS Nurse Hours

Can I include MDS nursing hours in PBJ?

MDS nursing hours worked onsite at the facility are generally included as RN with Administrative Duties or LPN/LVN with Administrative Duties.

RN w/ADMIN *definition*: Nurses (RN) who, as either a facility employee or contractor, perform the Resident Assessment Instrument function in the facility and do not perform direct care functions. Also include other RNs whose principal duties are spent conducting administrative functions. For example, the Assistant Director of Nursing is conducting educational/in-service.

LPN/LVN w/ADMIN *definition*: Those persons licensed to practice as licensed practical/vocational nurses in the State where the facility is located, and do not perform direct care functions. Also include other nurses whose principal duties are spent conducting administrative functions. For example, the LPN Charge Nurse is conducting educational/in-service, or other duties which are not considered to be direct care giving.

Back to Basics - Agency Hours

How do I record agency hours if they do not use the time clock?

- Hours worked recorded by the agency for payment by the facility
- Sign-in/sign out logs
- Contracted hours (non-nursing staff)

Back to Basics - Therapy Hours

Do therapy hours count in the Five Star staffing rating?

No, therapy hours are not currently used in the Five Star staffing calculation.

Live Q&A



Live Demo



SimplePBJ™

Your one-stop shop for PBJ success

Assemble, validate and submit your PBJ

Predict Staffing Five-Star ratings

Submit PBJ reports with one click

Benchmark results against other facilities

[Request demo](#)



Thank you for attending!

Recording and handouts are available at simpleltc.com/pbj-quarterly-check-in